

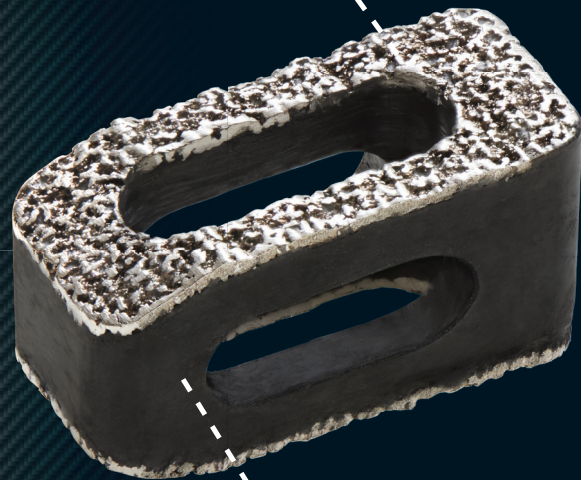


**CARBOFIX
SPINE**

CarboClear® Lumbar Cage System

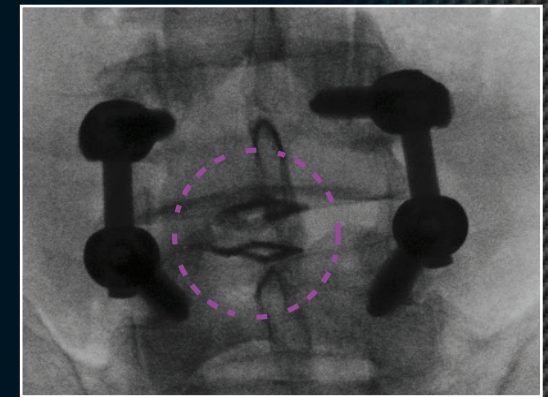
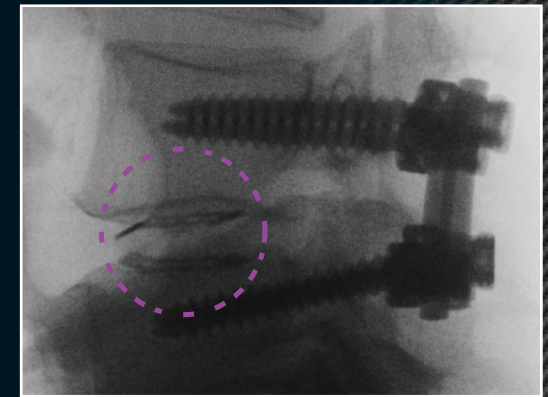
The Perfect Combination of Carbon Fiber & 3D-Printed Ti. Endplates

Endplates:
3D-Printed Porous Titanium

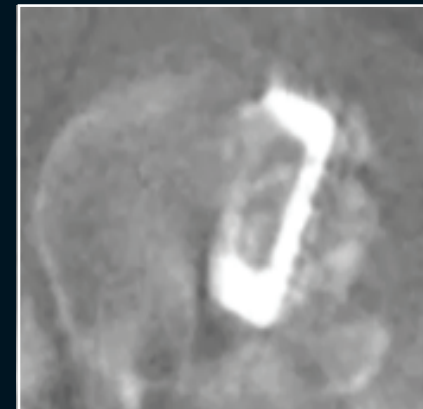


Carbon Fiber
Reinforced PEEK

- **Optimal Bone In-Growth**
 - 3D-Printed Porous Titanium Endplates
 - Modulus of Elasticity Similar to Cortical Bone
 - Extra Large Bone Graft Compartment
- **Negligible Artifacts in MRI & CT**
 - Enhanced Follow-Up
- **Carbon Fiber PEEK Core**
 - Radiolucent
 - Unparalleled Fatigue Resistance
- **PLIF or TLIF**



CarboClear® Lumbar Cage: X-Ray



CarboClear® Lumbar Cage: CT



**CARBOFIX
SPINE**

CarboClear® Lumbar Cage System

The Perfect Combination of Carbon Fiber & 3D-Printed Ti. Endplates

Lumbar Cage

Cat. Number	Width [mm]	Length [mm]	Lordosis Angle	Height [mm]	Image
CCLC23XX	10	23 (Small)	0°	8, 10, 12, 14	
CCLC23XXYY	10		5°	8, 10, 12, 14	
CCLC23XXYY	10		10°	10, 12, 14	
CCLC27XX	10	27 (Large)	0°	8, 10, 12, 14	
CCLC27XXYY	10		5°	8, 10, 12, 14	
CCLC27XXYY	10		10°	10, 12, 14	

XX - Length, in mm
YY - Lordosis Angle
* Supplied Sterile Packed

Large Bone Graft Compartment



Instrumentation Set



DISTRIBUTED BY:

CarboFix Spine Inc
7183 Beach Dr SW Suite 1 Ocean Isle Beach,
NC 28469, USA

All Implants supplied sterile packed

Tel: 1-800-408-0120

E-Mail: info@carbo-fix.com

Rx ONLY

Patents are pending

www.carbo-fix.com