



CARBOFIX
SPINE

CarboClear® Anterior Cervical Plate System

Carbon Fiber Implants: Seeing is Believing

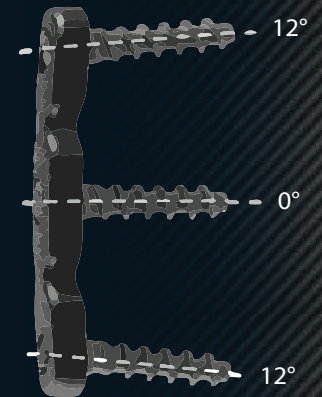
Carbon Fiber
Reinforced PEEK



Ø4.0 Self-Drilling or Ø4.5 Self-Tapping
Titanium Screws

- **Radiolucent and CT/MRI Artifact Free**
 - Effective Fusion Follow-up
- **Unparalleled Fatigue Resistance**
- **Polyaxial Screw Insertion**
- **Optimal Modulus of Elasticity**
- **No Cold Welding and Bone Ingrowth**
 - Easy Implant Removal
- **Essential in Tumor Cases:**
 - Negligible Backscattering and Attenuation for Optimal Dosage
- **Option for Patient Specific Plate**

R=330mm



R=25mm



Medial/Lateral Screw Orientation



**CARBOFIX
SPINE**

CarboClear® Anterior Cervical Plate System

Carbon Fiber Implants: Seeing is Believing

Cervical Plates*

Cat. Number	Plate Type	Thickness [mm]	Width [mm]	Length*** [mm]
CERVP1XX0	One Level	2.5	18	22, 24, 26, 28
CERVP2XXX	Two Levels			31.5, 34, 36.5, 39, 41.5, 44
CERVP3XX0**	Three Levels			44, 47, 50, 53, 59, 62, 65
CERVP4XX0**	Four Levels			60, 64, 68, 72, 76, 80, 84, 88
SP0002**	Patient Specific			



XX - length, in mm

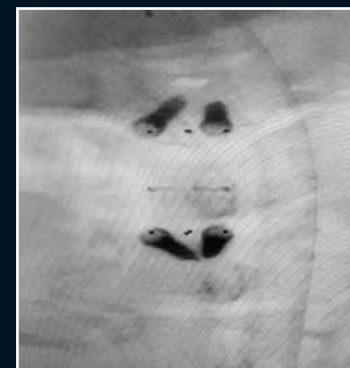
* Supplied Sterile Packed

** Special Order

*** Length between the screw hole centers is 10mm less

Titanium Screws

Cat. Number	Description	Diameter (mm)	Length (mm)	
CERPS40XXX	Self-Drilling Screw	4.0	12-20 (2)	
CERPS45XXX	Self-Tapping Screw	4.5	10-20 (2)	



CarboClear® Cervical Plate X-Ray Images

DISTRIBUTED BY:

CarboFix Spine Inc
7183 Beach Dr SW Suite 1 Ocean Isle Beach,
NC 28469, USA

All Implants supplied sterile packed

Tel: 1-800-408-0120

E-Mail: info@carbo-fix.com

Rx ONLY

Patents are pending

www.carbo-fix.com