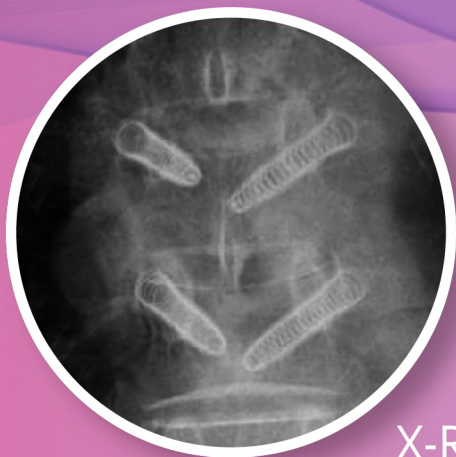


# CarboClear® Carbon Fiber Spinal Implants

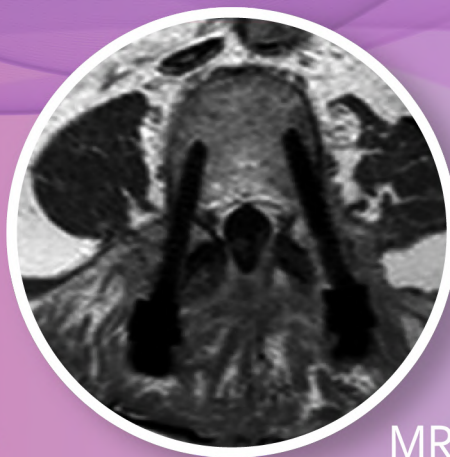


**CARBOFIX**  
SPINE

- *CT/MRI negligible artifacts*  
*Enhanced follow-up*
- *Enhanced radiation therapy administration*
- *Unparalleled fatigue resistance*
- *Modulus of elasticity similar to bone*
- *Indicated for Oncology and Degen Surgery*



X-Ray



MRI



CT



# CarboClear® Carbon Fiber Spinal Implants



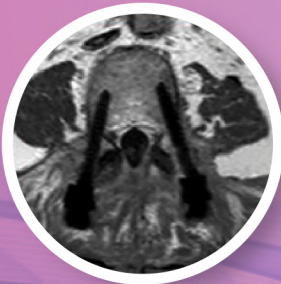
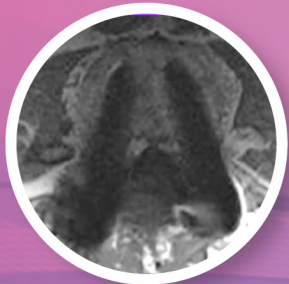
**CARBOFIX  
SPINE**

## Imaging

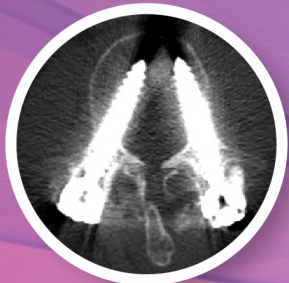
Titanium  
Screws

CarboClear® X  
Pedicle Screws

MRI



CT

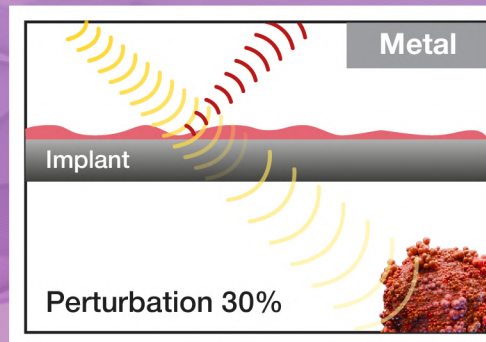
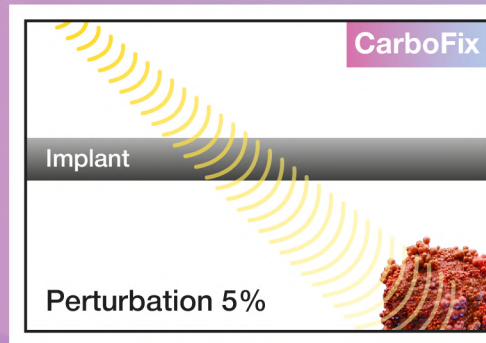


- Allows precise follow-up & early identification of local recurrence
- Improved radiation planning accuracy
- Reduced radiation planning work time

For more **Imaging** information,  
scan/click the QR code



## Radiation Therapy



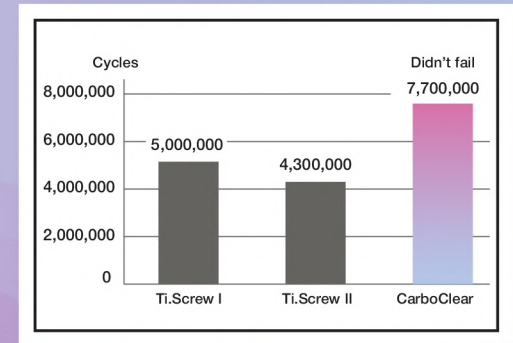
- Negligible effect on radiotherapy dose perturbation
- Radiosurgery: Negligible attenuation with Carbon Fiber Vs. up to 78% attenuation with Titanium

For more **Radiation Therapy** information,  
scan/click the QR code



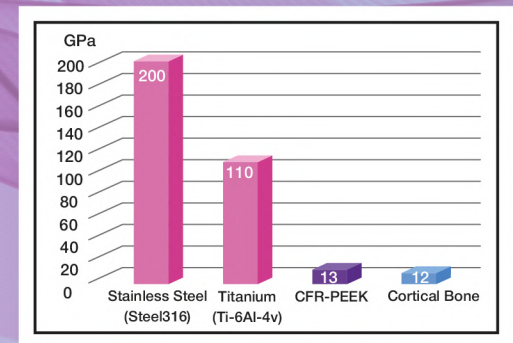
## Biomechanics

Construct Fatigue Test



- Enhanced support for non-fusion & delayed fusion patients

Modulus of Elasticity Similar to Bone



For more **Biomechanics** information,  
scan/click the QR code



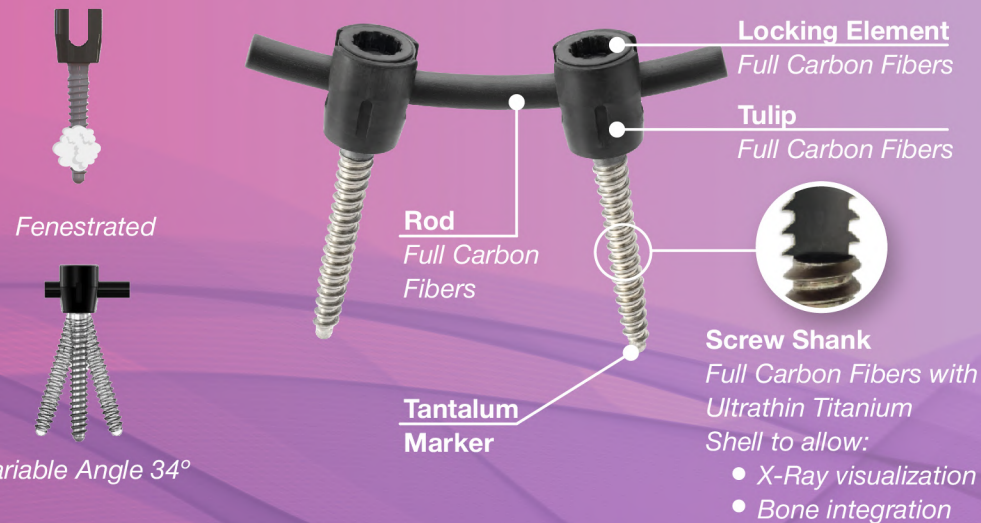
# CarboClear® Carbon Fiber Spinal Implants

## Thoracolumbar Implants



**CARBOFIX  
SPINE**

### CarboClear® X Thoracolumbar Pedicle Screw System The Only All Carbon Fiber System



### Sizes Thoracolumbar Pedicle Screw

#### Full Carbon Fibers / Hybrid

Ø (mm)	Length (mm)	
5.0	25*, 30*, 35, 40, 45	Non-Cannulated, Cannulated-Fenestrated
5.5	30*, 35, 40, 45	Non-Cannulated, Cannulated-Fenestrated
6.5	35, 40, 45, 50, 55	Non-Cannulated, Cannulated-Fenestrated
7.5	35, 40, 45, 50, 55	Non-Cannulated, Cannulated-Fenestrated
8.5**	40, 45, 50, 55, 65, 75, 85	Cannulated-Fenestrated

\* Solid only  
\*\* Only CarboClear X Pedicle Screw System

#### Short Rods (full Carbon Fibers)

Type	Diameter (mm)	Length (mm)	
Straight	6.0	35-80 (5)	
Curved	6.0	35-80 (5)	

#### Pre-shaped Rods (full Carbon Fibers)

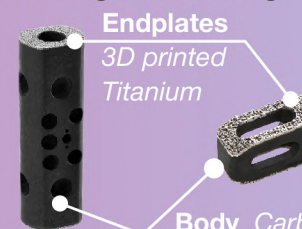
	Diameter (mm)	Length (mm)	
"S" Shaped Rod Type 1	6.0	190	
Curved Rod Type 2	6.0	280	
Shaped Rod Type 3	6.0	270	
Shaped Rod Type 4	6.0	285	
Straight Rod Type 5	6.0	270	
Titanium Rod	6.0	300	

#### Trans-Connectors (full Carbon Fibers)

Description	Diameter (mm)	Length (mm)	
Trans-Connector Rod	6	30-70 (2)	
Iliac Crest Rod	6	100	
Trans-Connector Locking Element+Ring			

### CarboClear® Thoracolumbar Cage & VBR®

#### Seeing is believing



**Endplates**  
3D printed Titanium

**Body** Carbon Fiber reinforced PEEK

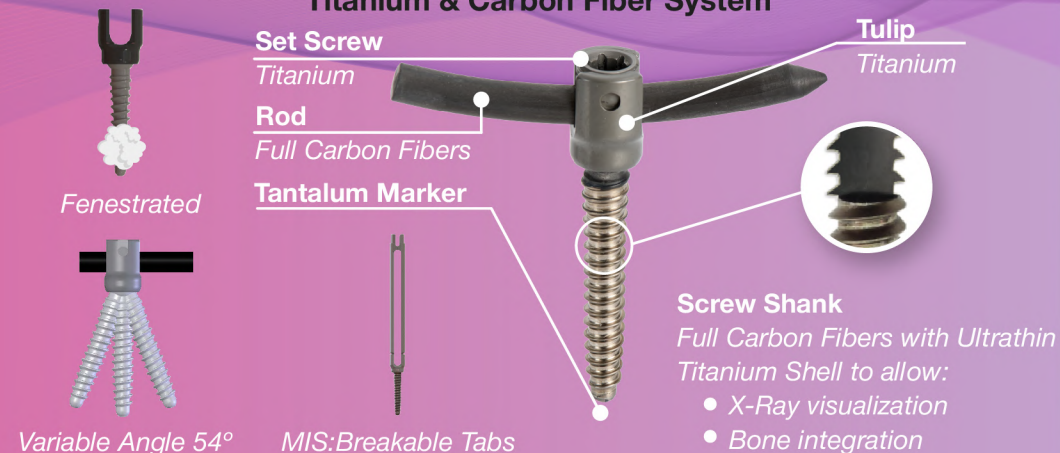
#### Lumbar Cage

Cross Section (mm)	Hight (mm)	Lordosis (°)
10x23	8, 10, 12, 14	0, 5, 10
10x27	8, 10, 12, 14	0, 5, 10

#### Thoracolumbar VBR

Cross Section (mm)	Hight (mm)
22x27	30-85 (5mm increments)
25x30	30-85 (5mm increments)
27.5x35	30-85 (5mm increments)

### CarboClear® Hybrid Thoracolumbar Pedicle Screw System Titanium & Carbon Fiber System



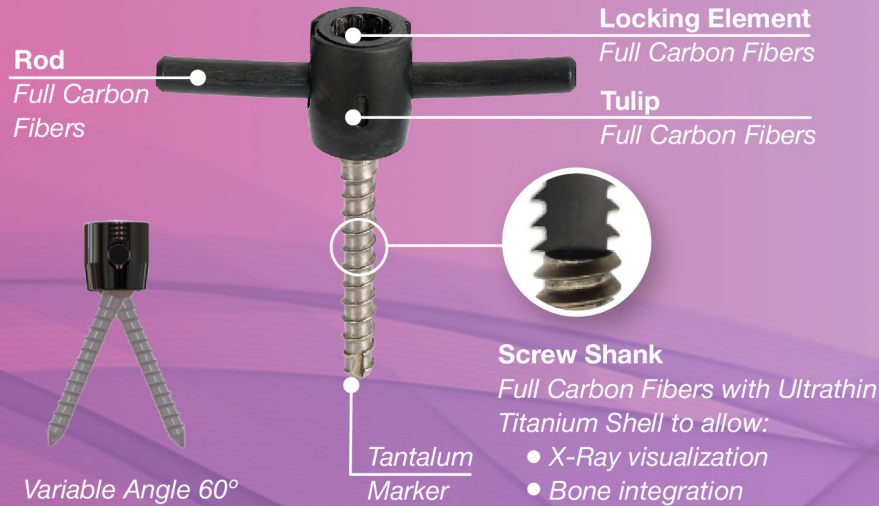
# CarboClear® Carbon Fiber Spinal Implants

## Cervical Implants



**CARBOFIX  
SPINE**

### CarboClear® Posterior Cervical Screw System<sup>©</sup> The Only All Carbon Fiber System



### Posterior Cervical Screws (Full Carbon Fibers)

Ø (mm)	Length (mm)	
4.0	12-40 2mm increments	Non-Cannulated
4.5	12-40 2mm increments	Non-Cannulated

### Rods (full Carbon Fibers)

	Diameter (mm)	Length(mm) (Increments)	
Straight	4.0*	200	
Curved	4.0*	30-100(10), 200	
Titanium	4.0*	200	

### CarboClear® Anterior Cervical Plate<sup>©</sup>

Type	Thickness (mm)	Width (mm)	Length* (mm)
One level	2.5	18	22, 24, 26, 28
Two levels			31.5, 34, 36.5, 39, 41.5, 44
Three levels			44, 47, 50, 53, 56, 59, 62, 65
Four levels			60, 64, 68, 72, 76, 80, 84, 88

\* Length between the screw hole centers is 10mm less



### CarboClear® Cervical Cage & VBR<sup>©</sup>

#### VBR

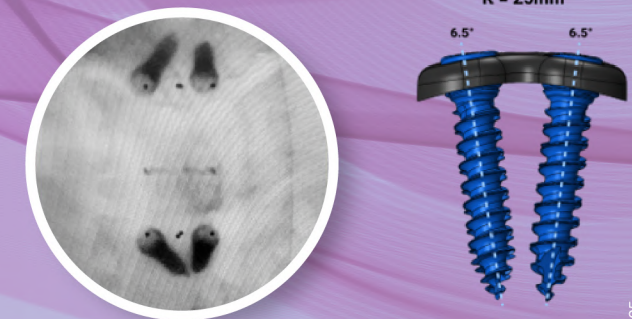
Cross section(mm)	Lordosis (°)	Hight (mm)
12X14	0°, 8	16-44 46-70* (2 mm increments)
14X16*	0, 8	16-70 (2 mm increments)

#### Cage

Cross section(mm)	Lordosis (°)	Hight (mm)
12X14	0°, 8	4, 5, 6, 7, 8
14X16*	0, 8	4, 5, 6, 7, 8

\* Special order

#### Endplates: 3D printed Titanium



#### Manufactured by:

CarboFix Orthopedics Ltd. Tel: +972-9-9511511  
11 Ha'hoshlim St., Herzeliya E-mail:  
4672411, Israel info@carbo-fix.com

#### U.S.A. office:

CarboFix Orthopedics, Inc. Tel: 1-800-408-0120  
903 N. Bowser Rd. Ste. 330 E-mail:  
Richardson, TX 75081, USA usa@carbo-fix.com

#### EC Authorized representative:

MedNet EC-REP Ilb GmbH  
Borkstrasse 10, 48163 Muenster  
Germany

#### Patent protected

**CE Rx ONLY**  
0483

© Non-CE

For availability & approved indications in your geography, please refer to the products IFU



www.carbo-fix.com